



# CONTENTS

WHY CHOOSE EASYGATES DIRECT? .....	01
SAFETY PRODUCT APPLICATIONS .....	02
PLUG'N'SENSE FOR SENTIR EDGE .....	05
PRE-MADE EDGES & DOOR SAFETY .....	08
SLIDING GATE TRANSMISSION SYSTEM .....	10
SAFETY RELAYS, MATS & BUMPERS .....	11
FORCE TESTING EQUIPMENT / LIGHT CURTAIN .....	12
PHOTOCELL SENSORS .....	14
LOOP DETECTORS & CABLES .....	16
ENCLOSURES & LASER ETCHING .....	17

## LOST A PRODUCT MANUAL?



**LITERATURE FOR THOUSANDS  
OF TOP BRAND SAFETY AND  
AUTOMATION PRODUCTS  
COMPLETELY FREE!**

[manuals.easygates.co.uk](http://manuals.easygates.co.uk)

## PERSONALISED SERVICES

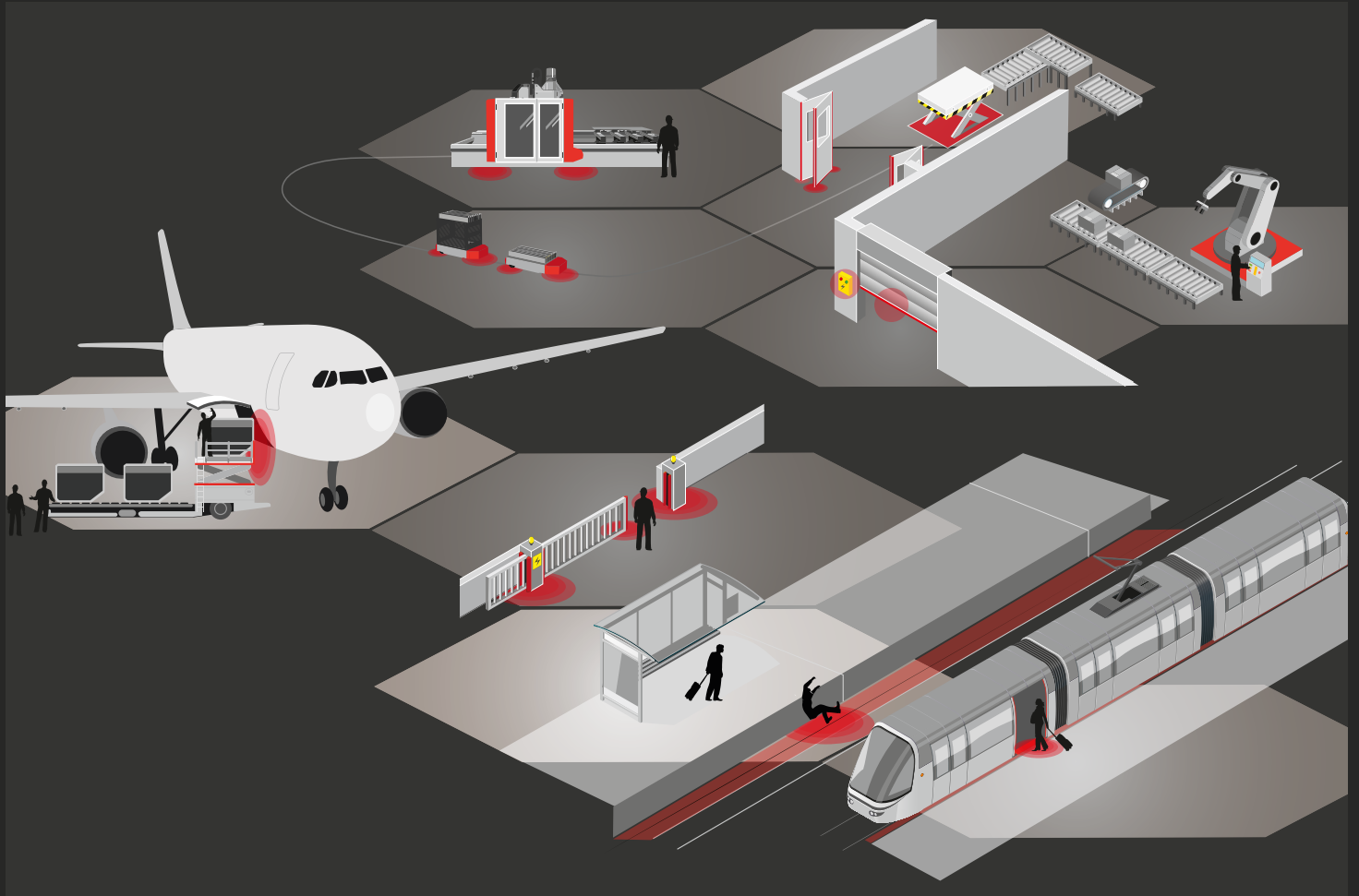


Personalise your products and raise your brand awareness with our state of the art laser etching service offered at highly competitive rates.

**REMOTE CONTROLS, ENCLOSURES  
CE PLAQUES, PHOTOCELLS & KEYPADS**

# WHY CHOOSE EASYGATES DIRECT?

EasyGates Direct has established itself as a market leader in the specification, supply & support of safety solutions for the UK gate, door and machine industries. Our vast product range can be customised to suit almost any application, with systems providing both contact and non contact technologies. We offer the complete safety solution package.



EasyGates Direct is the exclusive UK Competence Partner of ASO Safety Solutions, a worldwide manufacturer of safety edges, mats & bumpers. Our established partnership provides us with the ability to service the gate, door & machinery industries with bespoke products in various materials, colours & finishes.

- ▶ Sole UK Competence Partner Centre
- ▶ Pre-sales specification & support
- ▶ After sales support
- ▶ Large holding of stock
- ▶ Secure on-line trade store for 24/7 ordering
- ▶ Made to order safety edges
- ▶ Self-assembly components & training
- ▶ On-line technical videos & manuals
- ▶ OEM bespoke product solutions

**ASO** Safety  
Solutions  
Competence Partner Center



# SAFETY PRODUCT APPLICATIONS

The following diagrams depict some typical types of door, gate, barrier and machinery applications, where various methods of achieving safety could be applied from our product range.

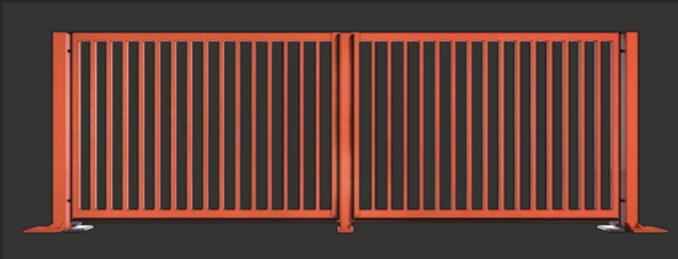
**PLEASE NOTE:** These examples represent only some of the possible solutions, other products or solutions may be more suitable. EasyGates Direct recommends that each type of installation is fully risk assessed by a competent professional before any of these examples are implemented. For further advice please contact our pre-sales team on **0845 0545070**.



## TRAFFIC BARRIERS

**SENTIR**  
*edge*

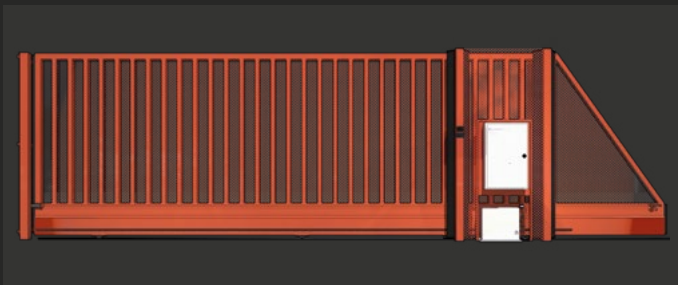
Safety contact edges such as the **GF 25.30** are used on the leading surface of the arm to eliminate crushing and vehicle impact points.



## AUTOMATED SWING GATES

**SENTIR**  
*edge*

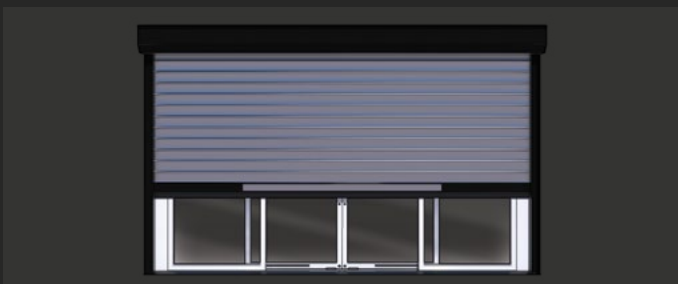
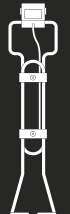
In combination with photocells, safety contact edges are used to eliminate crush and shearing hazards in the path of the gate leaf. The hinge areas are also protected by edges such as the **SENTIR edge 15.25TT**.



## AUTOMATED SLIDING GATES

**INDUS**

In combination with photocells, safety contact edges are used to eliminate crush hazards in the path of the gate leaf. The portal area is also protected by edges such as the **F45, F65 & F85 SENTIR edges**, utilizing the **AL-30W** angled aluminium profile to close large gaps. Safety edge solutions are managed by the **INDUS transmission system** for the fastest response times.



## INDUSTRIAL DOORS/SHUTTERS

**SENTIR**  
*edge*

Safety Edges such as the **SENTIR edge 30.70TT** are used on the leading edge of the door in combination with photocells to eliminate the crushing hazards and vehicle impact points.

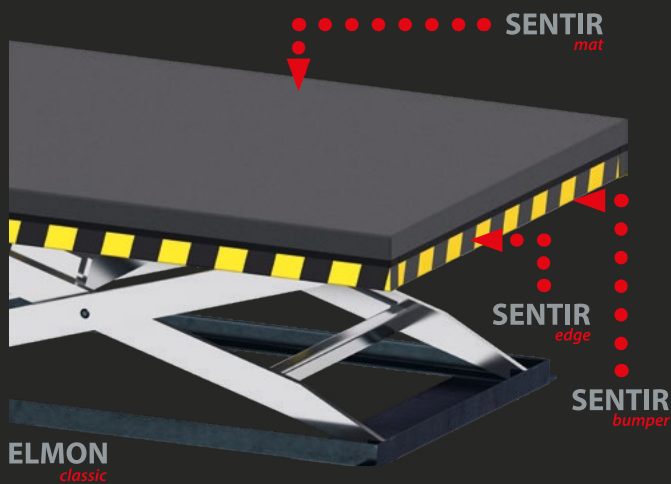


## GARAGE DOORS

**SENTIR**  
*edge*

In combination with photocells, the **SENTIR edge 15.25TT** can be used on the leading edge of a garage door to eliminate crushing hazards and vehicle impact points.





## LIFT & ACCESS TECHNOLOGY

Work platforms, lifting vehicles and vertically and horizontally moving parts can all be potentially dangerous for operators. **SENTIR bumper** contact buffers provide switching pulses at the correct time, when used with the **ELMON** safety relay they offer safety assurance.

Contact edges and contact buffers reliably switch off machines in the event of a crushing incident to avoid personal or material damage (buffers with the largest overtravel). Contact mats detect the presence of something or someone in a hazardous area to stop potential injury or damage. **SENTIR mat** also offers a wide range of design options including shape, surface finish, colour and illumination.

## INDUSTRIAL SCISSOR LIFTS

Lift vehicles can be secured with the application of **SENTIR mats**. If unauthorised access of the base platform occurs the mat stops the lift beam from being lowered and stops a potentially dangerous situation from occurring below the operator's cage. **SENTIR bumper** contact buffers can surround the operating cage to stop the cage from causing damage to facades such as the outer skin of aircraft. A secure stop signal is generated when touched.

The **SENTIR mat** contact mat is an ideal addition to the safe and proper use of scissor lift vehicles. When the operator steps onto the mat, they are detected and the vehicle can fully fulfil its functions.

The contact mat integrates safety functionally into the vehicle making it a comfortable and safe addition. Low height construction, ergonomically adaptable surface structure with hard/soft balance makes the mat very comfortable for the operator to stand on. The mat is unaffected by vibrations, dust, damp or cold conditions. Additional features such as integrated and colour coded foot switches and LED status displays can be added to the contact mat.

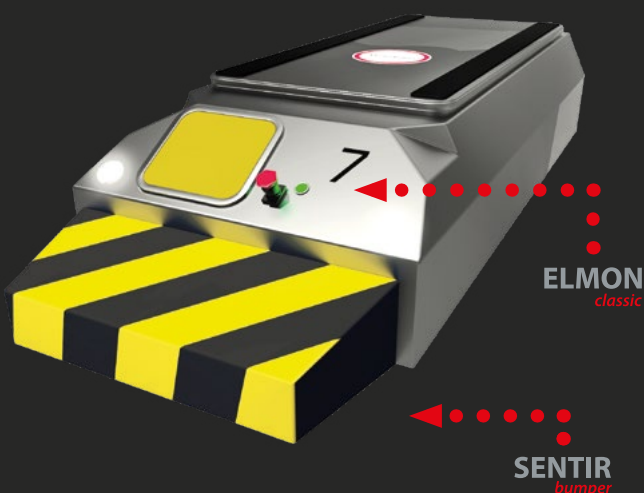


## TRANSPORT TECHNOLOGIES

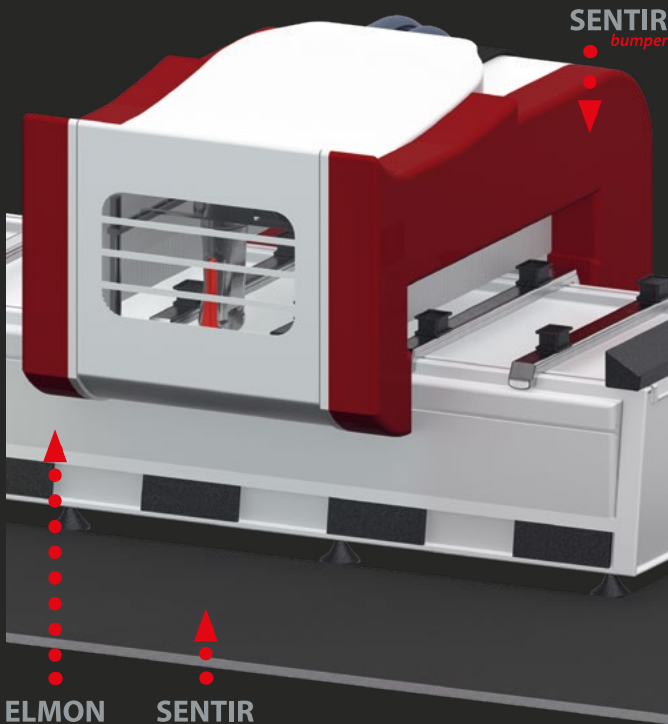
Moving and tool changing vehicles, heavy-duty trucks and other moveable equipment can be safely stopped with the use of **SENTIR bumper** safety contact buffers or **SENTIR edge** safety contact edges. Workers or users of systems are protected against impacts and entrapment which offers a high degree of peace of mind.

The **ELMON** series electronic evaluation system ensures safe stopping in the event of activation. Safety category requirements, interfaces and sensor numbers can be monitored to fulfil your specifications.

Contact buffers provide protection to property and people. The individually designed foam cores gently buffer during overtravel and the integrated sensor in the **SENTIR bumper** ensures fastest reaction paths. Developed and manufactured in-house, the outstanding appearance and feel are complemented by artificial leather covers. Maximum shape stability and a secure barrier against external influences make this an ideal choice.





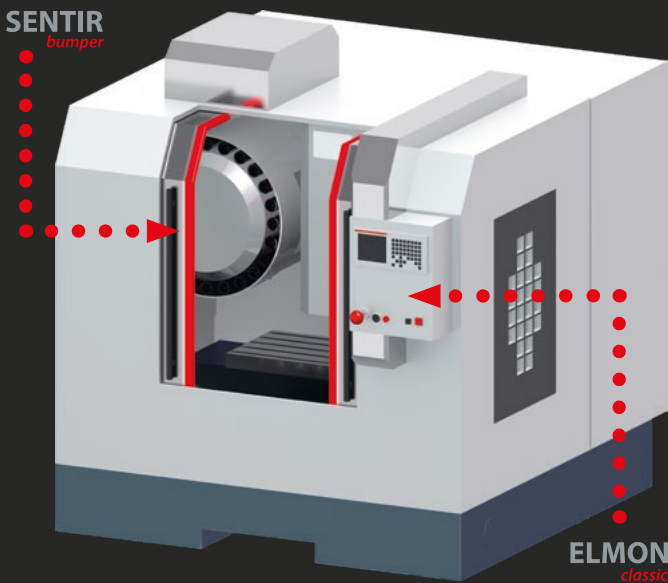


## AUTOMATED MACHINERY

We understand that maximum speed means increased efficiency. The **SENTIR bumper** contact buffers provide 100% operation protection and continued machine processing at reduced speed when the defined safety zone is entered. An immediate stop signal is triggered when direct contact is made in the acute hazard area. The over travel distance of the gantry and the allowed forces are also taken into account.

Multi-zone workspaces with hazardous areas will benefit from **SENTIR mat** contact mats. Skilled operators of milling, pressing, turning or welding machines can pick up finished parts at full speed. When the safety zone is entered the contact mats will reduce the speed of the gantry and if the danger zone is triggered the mats will trigger an immediate stop.

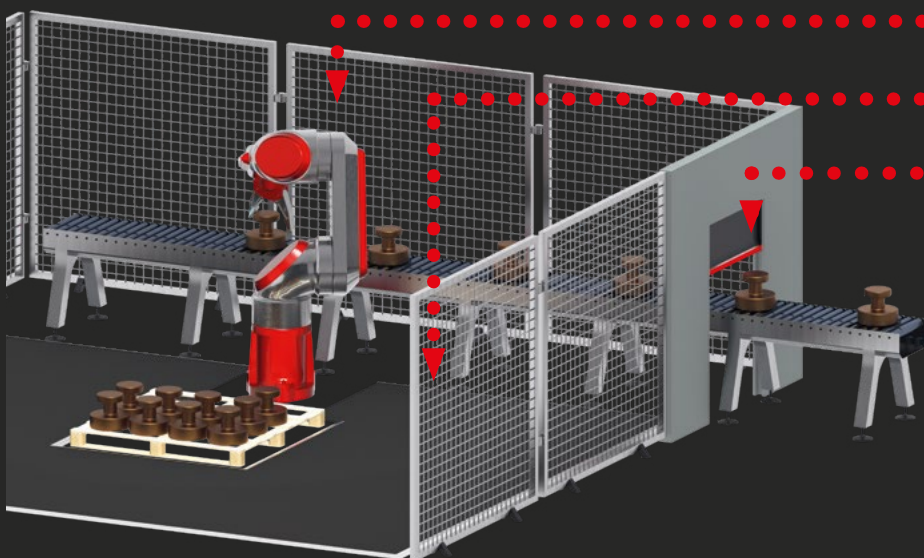
Utilise your surface area to the maximum with the use of **SENTIR sensors**. No additional protective enclosures are required and the sensors aren't triggered by machine fall-out, vibrations or other ambient influences. Just like the **ELMON** series of additional evaluation units, the **SENTIR sensors** reliably switch off during actuation.



## AUTOMATED PROCESSING CENTERS

Fast opening and closing automatically operated doors save time, however if they aren't fitted with safety edges they could cause entrapment. **SENTIR edge** contact edges have a patented double chamber system that protects the internal switching chamber from external mechanical influences. When activated, the trigger immediately stops or reverses the doors. Radii and bend angles enable precise integration into the door and machine designs with the **SENTIR edge**. In addition to the broad portfolio of dimensions available, customised profiles to meet the individual needs are also available e.g.: translucent material that can be illuminated by LED strips

**SENTIR mat** contact mats from ASO protect against hazardous situations caused by moving parts, either in front of or inside the machine. The presence of an operator is detected in a variety of settings by the contact mat.



## ROBOTICS

Automated production lines allow for machine precision improving consistency and cost, however if they aren't fitted with safety systems they are susceptible to crushing, shearing, and draw in hazards.

**ELMON** safety relays offer a reliable link between safety sensors and PLC. They can be customized to suite the individual customer requirements.

# PLUG'N'SENSE FOR SENTIR EDGE SELF-ASSEMBLY SAFETY EDGE SYSTEMS

**SENTIR**  
*edge*

The **SENTIR edge** contact safety edges from ASO Safety Solutions are pressure-sensitive buffers, which are applied to ensure the safety of closing edges that create possible hazards such as crushing and shearing points. They can be installed anywhere from automatic gates to machines and vehicles used for handling equipment or moving stage elements, and are installed to protect individuals from bodily harm or worse.



**1. INSERT THE LOCK CAP**



**2. INSERT THE CONTACT PLUG**



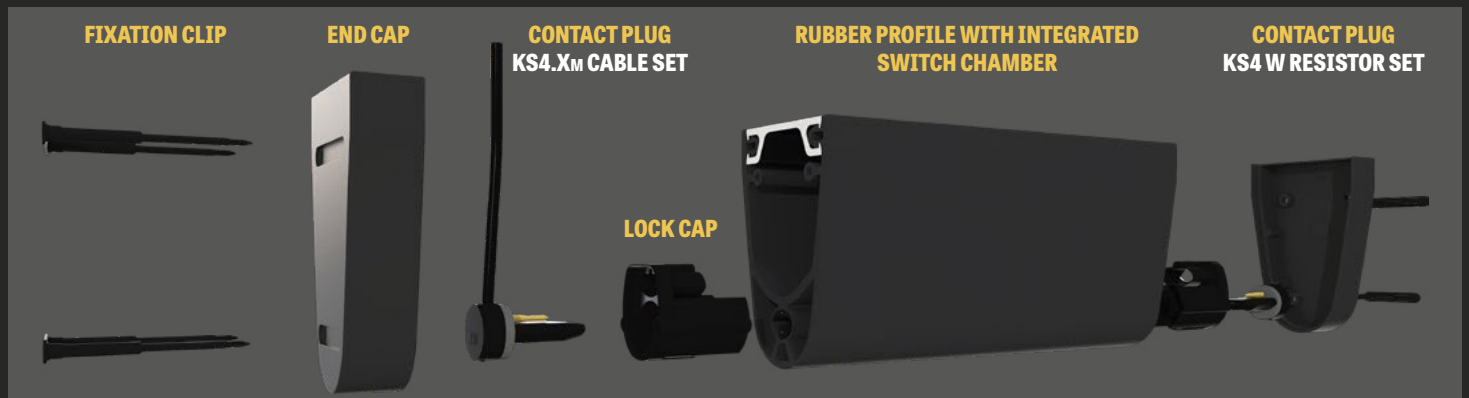
**3. PUT ON THE END CAPS**



**4. ASSEMBLY COMPLETE**

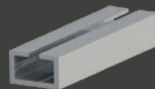
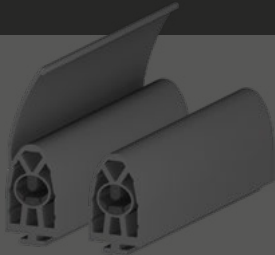
## KS4 SELF-ASSEMBLY GUIDE

To begin, choose your Rubber Profile and Aluminium Rail. Ensure you have purchased the correct **Cap Sets**, there are two types; the **KS4.Xm Cable Set** and the **KS 4 W Resistor Set**. The **KS4.Xm Cable Set** contains the Wiring Plug and length of cable you will need to connect to a control system. The **Resistor Set** contains the Terminal Resistor.



## SENTIR EDGE 15.25TT

**T Base**  
Overall Height:  
TT = 34mm / + Lip = 54mm



- ▶ **AL 15-9:** Aluminium Profile
- ▶ **TTLi** Sealing lip option
- ▶ **KS 4 Xm - 15.25** Cable Set



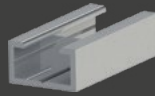
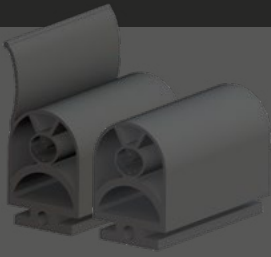
- ▶ **KS 4 W - 15.25** Resistor Set
- ▶ **Available lengths:**  
0.5m, 2.5m, 5m



- ▶ **15.25** on the leading edge of a garage door, protecting the crush area and vehicle impact zone

**SENTIR EDGE**  
**25.30TT**

**T Base**  
Overall Height:  
TT = 44mm / + Lip = 62mm



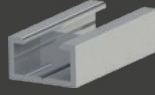
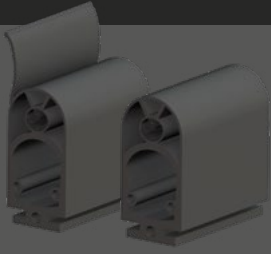
- ▶ AL 25-14 Aluminium Profile
- ▶ TTLa & TTLL Sealing lip option
- ▶ KS 4 Xm – 25.30 Cable Set



- ▶ KS 4 W - 25.30 Resistor Set
- ▶ Available lengths:  
0.5m, 2.5m, 5m

**SENTIR EDGE**  
**25.45TT**

**T Base**  
Overall Height:  
TT = 59mm / + Lip = 77mm



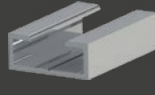
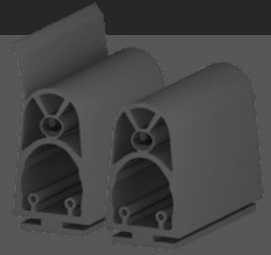
- ▶ AL 25-14 Aluminium Profile
- ▶ TTLa & TTLL Sealing lip option
- ▶ KS 4 Xm – 25.45 Cable Set



- ▶ KS 4 W - 25.45 Resistor Set
- ▶ Available lengths:  
0.5m, 2.5m, 5m

**SENTIR EDGE**  
**35.55TT**

**T Base**  
Overall Height:  
TT = 69mm / + Lip = 85mm



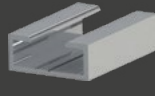
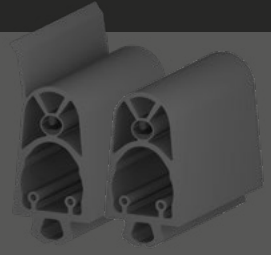
- ▶ AL 35-14 Aluminium Profile
- ▶ TTLa Sealing lip option
- ▶ KS 4 Xm – 35.55 Cable Set



- ▶ KS 4 W - 35.55 Resistor Set
- ▶ Available lengths:  
0.5m, 2.5m, 5m

**SENTIR EDGE**  
**35.55CT**

**Clip Base**  
Overall Height:  
CT = 69mm / + Lip = 85mm



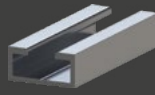
- ▶ AL 35-14 Aluminium Profile
- ▶ CTLa Sealing lip option
- ▶ KS 4 Xm – 35.55 Cable Set



- ▶ KS 4 W - 35.55 Resistor Set
- ▶ Available lengths:  
0.5m, 2.5m, 5m

**SENTIR EDGE**  
**30.70TT**

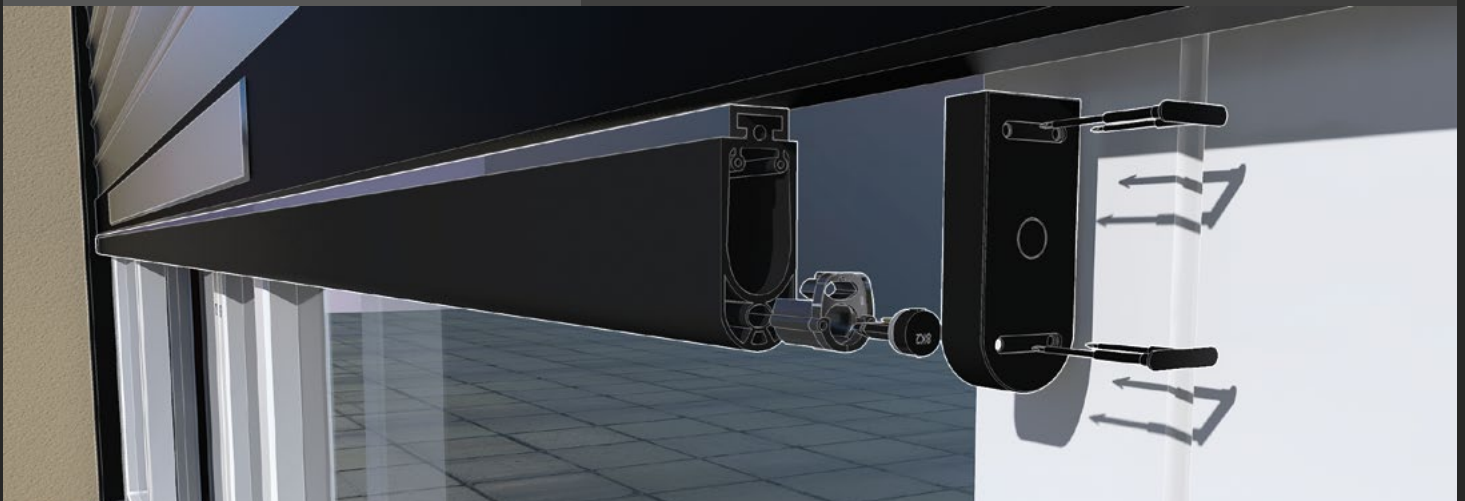
**T Base**  
Overall Height:  
TT = 84mm / + Lip = 102mm



- ▶ AL 30-14 Aluminium Profile
- ▶ TTLa Sealing lip option
- ▶ KS 4 Xm – 30.70 Cable Set



- ▶ KS 4 W - 30.70 Resistor Set
- ▶ Available lengths:  
0.5m, 2.5m, 5m



▶ **30.70TT** on the leading edge of an industrial shutter door, protecting the crush area

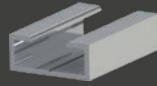


## SENTIR EDGE 35.85TT

T Base

Overall Height:

TT = 99mm / + Lip = 117mm



- ▶ AL 35-14 Aluminium Profile
- ▶ TTLa & TTLL Sealing lip option
- ▶ KS 4 Xm – 35.85 Cable Set



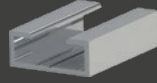
- ▶ KS 4 W - 35.85 Resistor Set
- ▶ Available lengths:  
0.5m, 2.5m, 5m

## SENTIR EDGE 35.85CT

Clip Base

Overall Height:

CT = 99mm / + Lip = 117mm



- ▶ AL 35-14 Aluminium Profile
- ▶ CTLa & CTLL Sealing lip option
- ▶ KS 4 Xm – 35.85 Cable Set



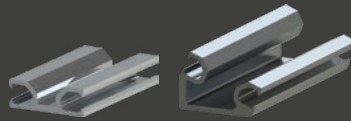
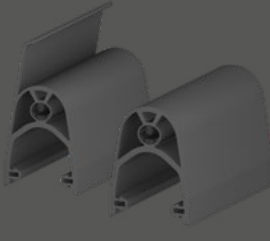
- ▶ KS 4 W - 35.85 Resistor Set
- ▶ Available lengths:  
0.5m, 2.5m, 5m

## SENTIR EDGE 45ST

Lateral Clip Base

Overall Height:

ST = 45mm



- ▶ AL 30-10 & 30-10W
- ▶ STLi Sealing lip option
- ▶ KS 4 Xm – 45 Cable Set



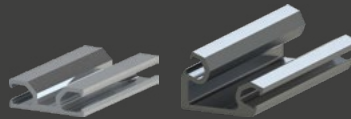
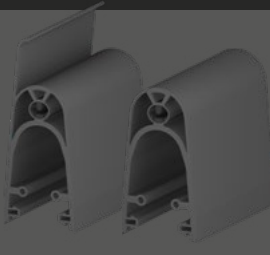
- ▶ KS 4 W - 45 Resistor Set
- ▶ Available lengths:  
0.5m, 2.5m, 5m

## SENTIR EDGE 65ST

Lateral Clip Base

Overall Height:

ST = 65mm



- ▶ AL 30-10 & 30-10W
- ▶ STLi Sealing lip option
- ▶ KS 4 Xm – 65 Cable Set



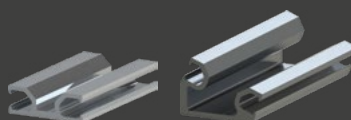
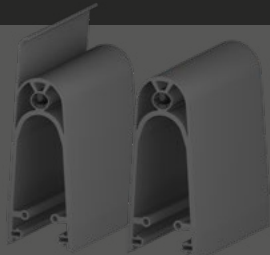
- ▶ KS 4 W - 65 Resistor Set
- ▶ Available lengths:  
0.5m, 2.5m, 5m

## SENTIR EDGE 85ST

Lateral Clip Base

Overall Height:

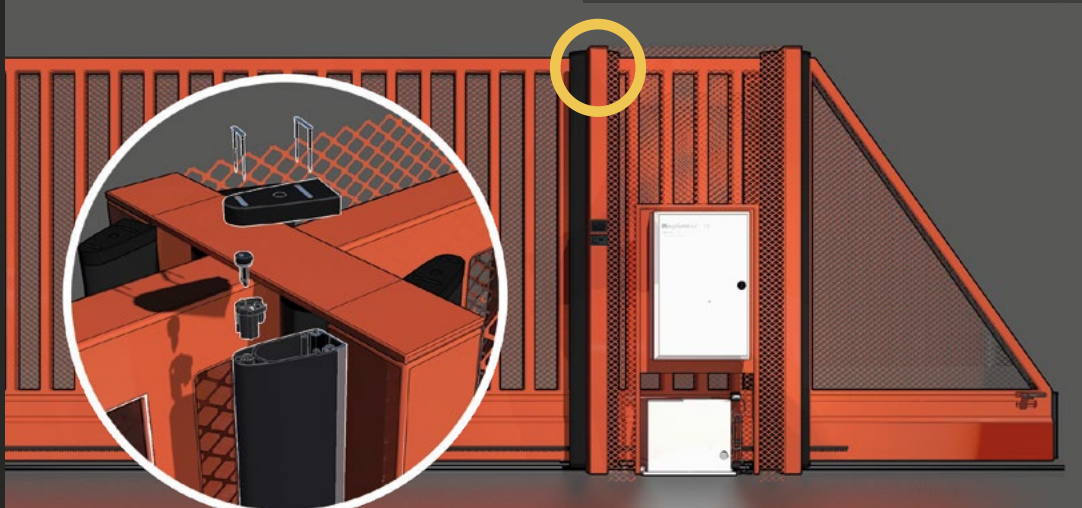
ST = 85mm



- ▶ AL 30-10, 30-10W & 40-10
- ▶ STLi Sealing lip option
- ▶ KS 4 Xm – 85 Cable Set



- ▶ KS 4 W - 85 Resistor Set
- ▶ Available lengths:  
0.5m, 2.5m, 5m

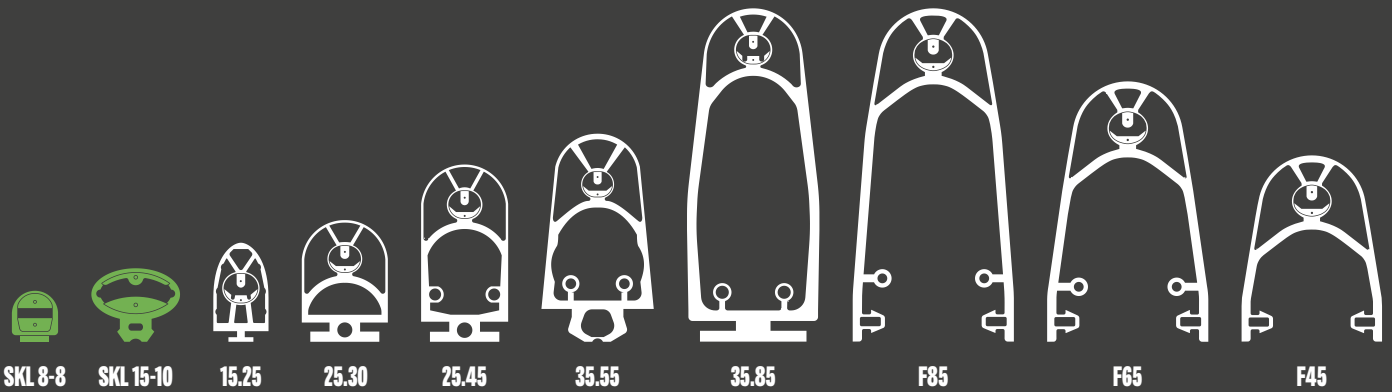


- ▶ F85ST & AL30-10W protecting a sliding gate's portal areas from shear/draw in hazards



### SLAT CUTTERS

Lowe mitre cutters and slat cutters are anvil cutters to ensure straight cuts. With stop faces for clean 45° or 90° cutting of slats, profiles and seals made from plastic, rubber or wood.



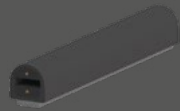
**ALL ASO EDGE PROFILES AVAILABLE AS PREMADE ORDER**

**ALL EDGES COME READY TO FIT, INCLUDING ALUMINIUM, END CAPS AND 2.5M CABLE(S) OR RESISTORS.**

Our pre-made safety edges can be ordered online at [www.easygatesdirect.co.uk](http://www.easygatesdirect.co.uk), by e-mail, fax or from our experienced sales staff by phone, with fast lead-times. Courier charges apply. Please specify the type of edge required when ordering.

**SENTIR EDGE 8-8**

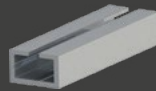
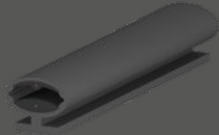
Self Adhesive  
Height: 8mm



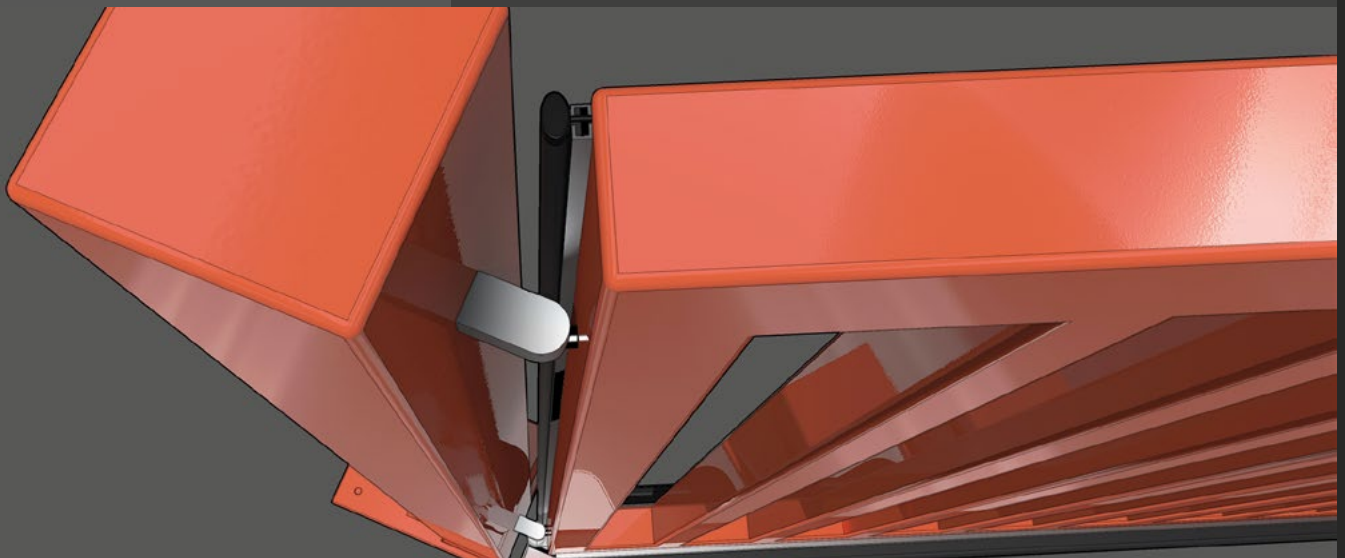
- ▶ Available as pre-made only (IP65 rated)
- ▶ **Cable lengths:** 0.5m, 2.5m, 5m
- ▶ Suitable for small hinge gaps on wooden gates

**SENTIR EDGE 15-10TT**

Clip Base  
Overall Height: 19mm



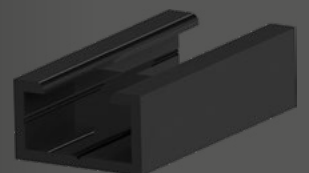
- ▶ Available as pre-made only (IP65 rated)
- ▶ **Cable lengths:** 0.5m, 2.5m, 5m
- ▶ Suitable for small hinge gaps on all gates.
- ▶ Supplied with **AL 15-9** Aluminium Profile

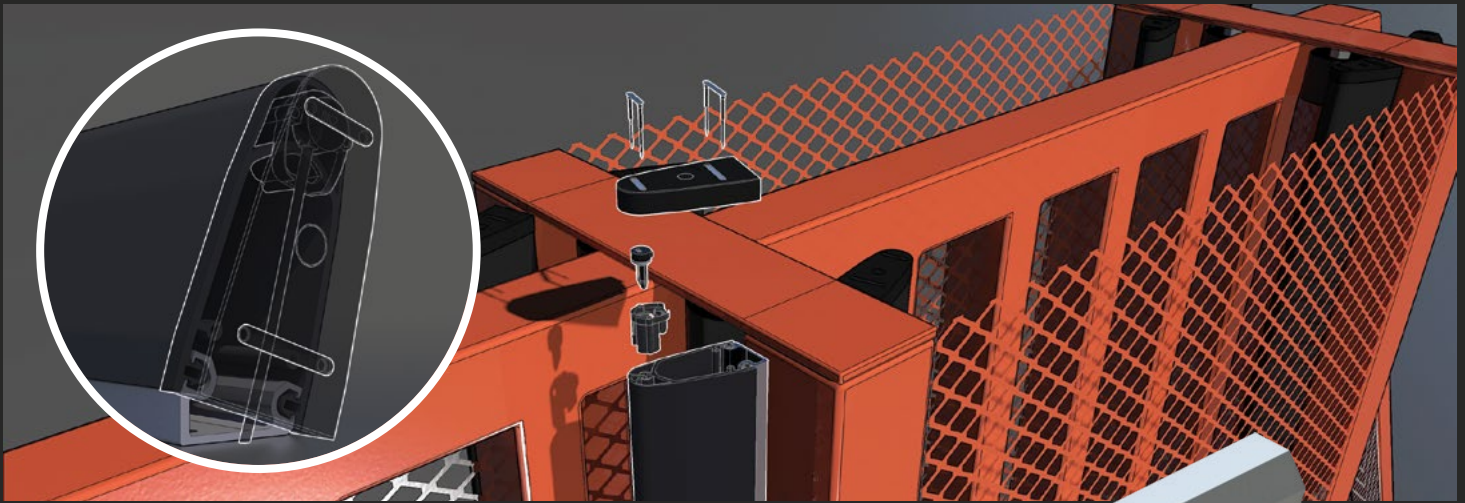


▶ **15-10TT** protecting the hinge area of a swing gate from crushing/shearing hazards

**NEW! AL25-14B ANODISED BLACK ALUMINIUM**

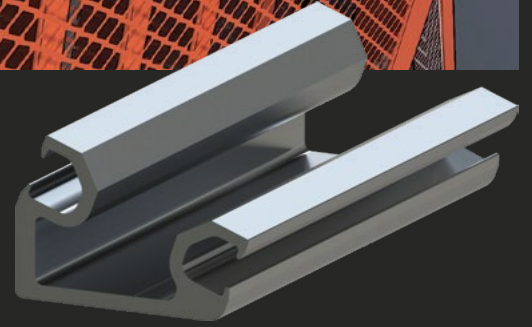
Our AL25-14 series aluminium can now be ordered optionally anodised in high quality black finish (order code AL25-14B). This popular backing profile suits the SENTIR edge 25.30 & 25.45 profiles and gives an enhanced aesthetic look to black gates.





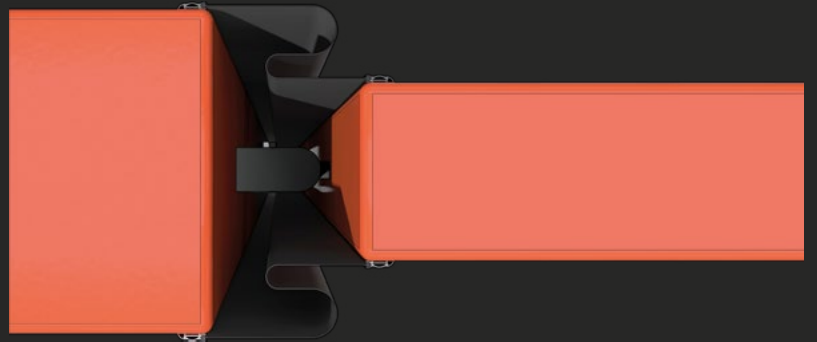
## NEW! AL30-10W ANGLED ALUMINIUM

**NEW aluminium profile AL30-10W** addresses the problem of angled portal edges without the need for a special rubber profile. The AL30-10W is raised on one side at a 20 degree angle, which is able to direct our range of SENTIR edge 45/65/85 standard safety edge profiles inward, thus reducing the gap between portal and leaf.



## FINGERKEEPER INDUSTRIAL TPV HEAVY DUTY HINGE GUARD

FingerKeeper Industrial is a heavy duty finger-pinch protection device (anti-finger-trapping hinge guard) manufactured from black TPV fitted in an Anodised aluminium carrier, that has black inserts to conceal the fixing screws. The TPV safety strip prevents fingers being pinched on the hinge side of a gate. It is fixed to the gate and the post / pillar on the hinged side.



▶ Available lengths: 157mm x 2100mm, 257mm x 2100mm & 157mm x 2500mm

## CDVI FLEX COMPACT DOOR LOOP

- ▶ Facilitates transfer of cable/power from frame to door leaf.
- ▶ Excellent value with stainless steel loop and metal end caps.
- ▶ CDL concealed on hinge-line flexible loop has 7mm internal diameter.
- ▶ 2 & 3 pin transfer hinges Spring-loaded contacts, max 3A.



▶ Available lengths: 30 or 60mm

## 8A/12 WAY GEL FILLED CRIMP CONNECTORS

Box Of 500 Gel Crimps, Ideal for safety edge cable joins when needed.



▶ Length: 14.85mm x Width: 9.75mm

## C.K ELECTRICIANS TOOL KIT

- ▶ Technicians Tool Case
- ▶ Combination Plier 185mm
- ▶ VDE Side Cutter 180mm
- ▶ Insulated Screwdriver Set
- ▶ Junior Hacksaw
- ▶ Softech Tape 5m/16ft
- ▶ Automatic Wire Stripper



- ▶ Pocket Level 210mm
- ▶ Mainstester VDE 125-250V AC



# SLIDING GATE TRANSMISSION SYSTEMS

# ELMON

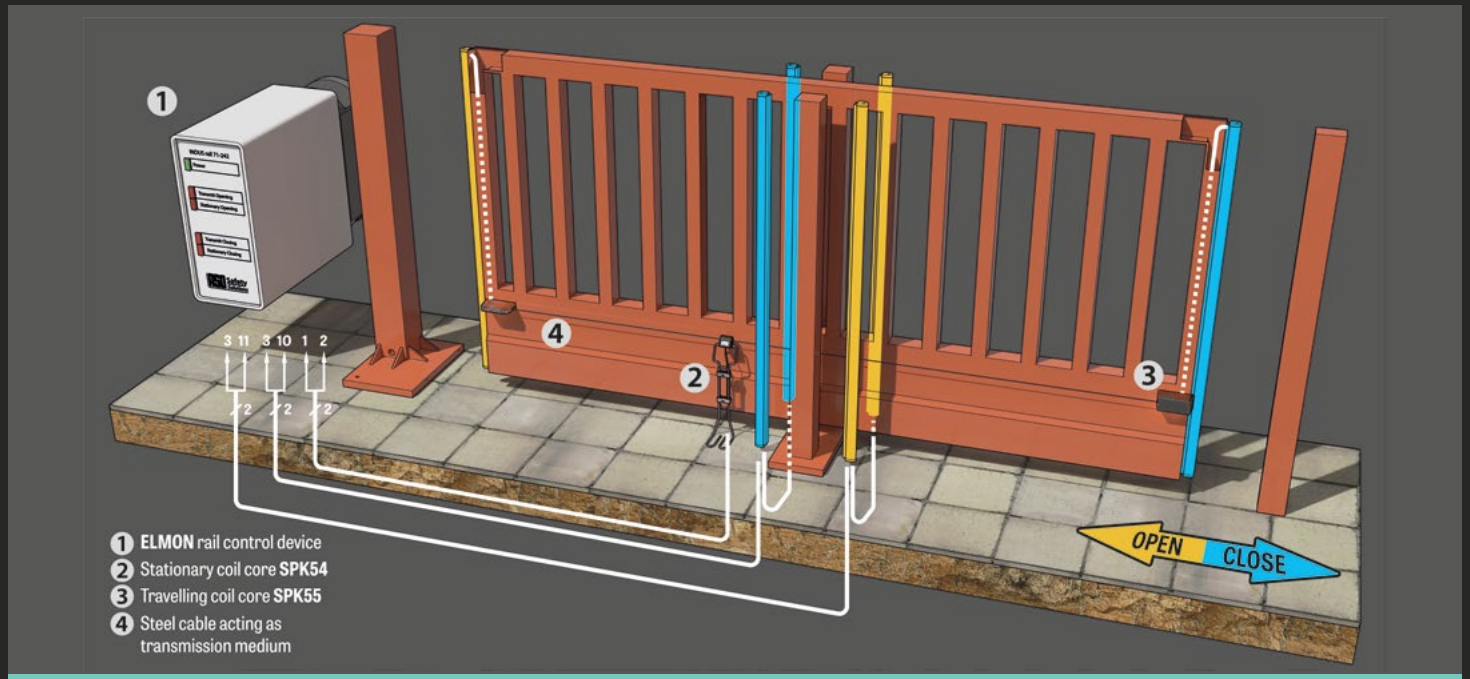
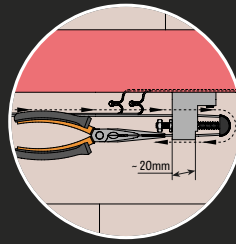
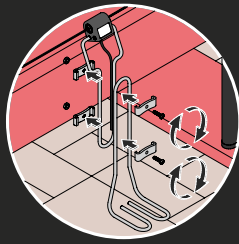
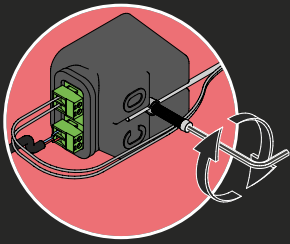
The ELMON hard wired transmission system represents the latest evolution of a 20 year tried and tested method for the evaluation of traveling safety edges on sliding gates. The compact and clever design allows the easy connection of moving safety edge sensors without the need for radio transmission or batteries. This enables a long service life, combined with the fastest possible transmission speeds, to aid quicker reaction times for force testing compliance. The supplied ISK evaluation controller also supports connection of stationary sensors allowing for 4 Channels with 2 safety rated directional relay outputs.

## INDUS SET S & R INDUCTIVE TRANSMISSION SYSTEM

### SETS AVAILABLE:

- ▶ SET S (CAT3)
- ▶ SET R (CAT2)

The kit has recently been updated to allow even easier connection of travelling edges.



# WIRELESS TRANSMISSION SYSTEMS

## RADIO BAND 3 KIT

Radio band 3 wireless transmission systems are used on doors and gates where installation of a hard wired solution is not practical. Kit includes **1 x transmitter & 1 tx receiver**.

- ▶ 3rd Generation receiver for optical, resistive and mechanical safety edges.
- ▶ Multi-frequency system: Four 868MHz self-adjusting channels CAT2/PL c.
- ▶ Nominal range 50 m.
- ▶ Memory: 6 transmitters (3 in relay 1, 3 in relay 2).
- ▶ 1 safety edge input per transmitter (up to 2 edges)



## TC08 WIRELESS KIT

TC08KIT is a 868 MHz bidirectional transmitter / receiver system. 868MHz for resistive 8,2 KΩ or contact safety edges. It is composed of **1 x transmitter TC08TX and 1 x receiver TC08RX**.

- ▶ 2 relay outputs
- ▶ Up to 4 transmitters per relay
- ▶ Power supply 12/24 Vca/cc
- ▶ Contact input : 2 N.C. or resistive (8,2 KΩ)
- ▶ Range : 50 m
- ▶ Battery self-powered










# SAFETY RELAYS

ELMON

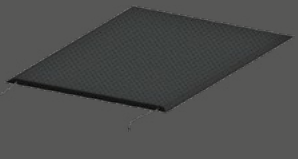
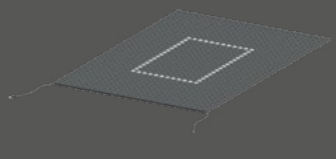
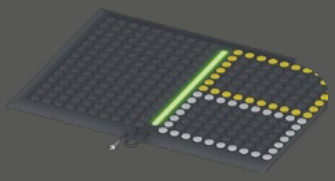

Single & Dual channel monitoring relays for 8.2k ohm systems. Our range of safety relays, mats & bumpers can be customised to suit almost any gate, door or machine application. Our team of pre-sales specialists will quickly identify the correct solution for your appliance or moving mechanism and provide all required support including wiring diagrams, specifications and training.

 24v	 24v	 INPUT 24v	 24-230v	
<b>ELMON RAIL SK32-242</b> 35mm DIN Mount Relay Output	<b>INDUS RAIL ISK71-242</b> 35mm DIN Mount Relay Output	<b>ELMON RAIL SK39-726</b> 35mm DIN Mount Voltage Output	<b>ELMON RAIL SK41-322</b> 35mm DIN Mount Relay Output	<b>RAIL TRANSFORMER DR-15-24</b> 35mm DIN Mount Power Supply

# SAFETY CONTACT MATS

SENTIR  
mat

The SENTIR safety contact mats are surface sensors with a single compound polyurethane surface, they are used for the protection of areas in industrial applications and automated production processes.

			
<b>SENTIR MAT 750 X 1000MM</b> Dot Surface	<b>SENTIR MAT 1000 X 1000MM</b> Multi-zone Switching	<b>SENTIR MAT 1500 X 1000MM</b> LED Surface	Available surface covers: Aluminium, Stainless Steel, Sand or custom.

# SAFETY CONTACT BUMPERS

SENTIR  
bumper

The SENTIR safety contact bumpers provide excellent cushioning and overtravel. They protect the operator and offer safe interaction between human and machine due to their limited space requirements.

				
<b>SENTIR BUMPER 60 X 100MM</b> Priced Per Meter	<b>SENTIR BUMPER 100 X 200MM</b> Priced Per Meter	<b>SENTIR BUMPER 150 X 300MM</b> Priced Per Meter	<b>SENTIR BUMPER 200 X 400MM</b> Priced Per Meter	<b>CUSTOM BUMPER</b> Contact us

ALL AVAILABLE IN ARTIFICIAL LEATHER OR NBR RUBBER

# LIGHT CURTAIN NON-TACTILE SENSORS



The LISENS range of light curtaining products is the result of countless hours of R & D work by ASO and represents one of the most feature rich curtaining products available on the market today. Both internal & external options are available with protection heights of up to 2.5m at distances of between 1-10 meters. Contact us to specify your exact application for prices.

- ▶ Supply voltage 10-30 V DC
- ▶ Current consumption < 60 mA at 24 V
- ▶ Mounting  $\pm 10^\circ$
- ▶ Opening angle  $\leq 5^\circ$
- ▶ Response time < 20 ms

# FORCE TESTING EQUIPMENT



## GTE KMG-LITE

DHF TS011:2016  
EN12445  
Compliant Device

- ▶ Highly affordable, with maximum performance & versatility
- ▶ No on-board memory or PC connectivity, results are recorded manually without need for a computer
- ▶ Results can be input into our free web report service, which creates a comprehensive report for you
- ▶ An extension arm set can be supplied that allows measurements on all types of doors & gates



Optional extension arm set providing 300/500mm extension pieces and tripod for industrial door measurement. This accessory includes a large carry case with room for KMG-LITE tester.

- ▶ Illuminated Numeric Display
- ▶ Mechanical Overload Protection
- ▶ Automatic Measurement Trigger



▶ KMG-LITE during testing with optional extension arm set

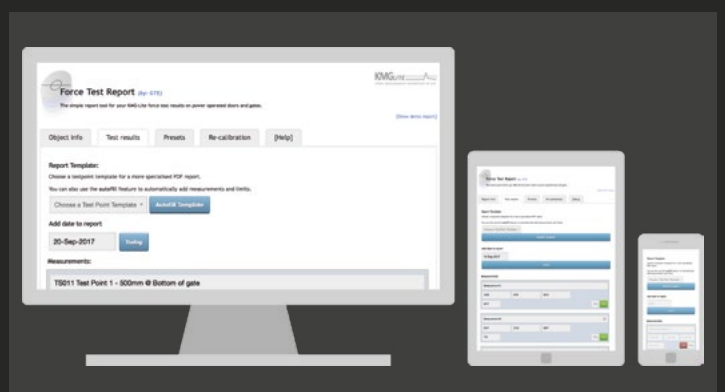
## NEED TO CREATE FORCE TEST REPORTS QUICKLY AND EASILY ?

The domain [www.forcetesttool.co.uk](http://www.forcetesttool.co.uk) now allows any user with an internet enabled device to produce free of charge force test reports for all their automated gates, traffic barriers and industrial / garage doors.

Visitors to the new improved site can pre-select templates for test point data which auto-populates the relevant fields, enabling the user to enter their data quickly and efficiently.

We can also supply customised PDF and Excel format templates to create your own reports quickly & efficiently offline allowing maximum flexibility.

## GTE FORCE TEST TOOL



# GTE KMG-2000-G

DHF TS011:2016  
EN12445  
Compliant Device

- ▶ Flagship solution for installers who require great flexibility and features combined with huge measurement storage capacity
- ▶ Carries on-board memory facilities for 500 measurements (166 sets or approx. 18 gates) and provides USB PC connectivity
- ▶ Allows the user to record the results from many gate tests, and produce comprehensive reports detailing the full extent of the force test data



Optional extension arm set providing 300/500mm extension pieces for the KMG-2000-G tester, no carry case included. ▲

▲ **Illuminated LCD Display**

▲ **On-board Graph Display**

▲ **Mechanical Overload Protection**

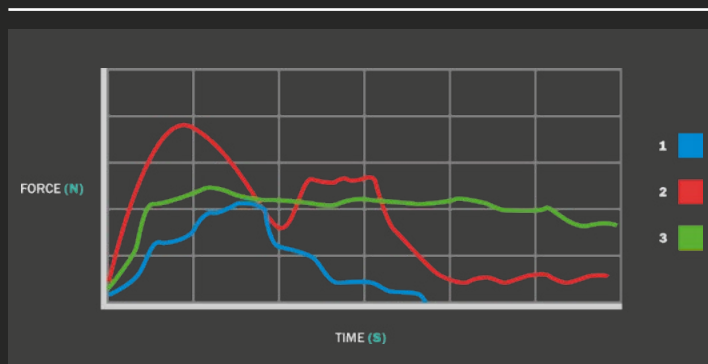
▲ **Computer Connectivity & Software**

▲ **Automatic Averaging**



▶ **KMG-2000-G** during testing

## RE-CALIBRATION



**WE ARE NOW ABLE TO OFFER A QUICK, RELIABLE UK CALIBRATION SERVICE TO ALL USERS OF KMG-LITE AND KMG-2000 FORCE TESTERS.**

EasyGates Direct, Nationwide electric gate automation, access control and safety supplier has been appointed as a UK calibration centre for the GTE range of force testing equipment.

With the large influx of force testing equipment coming in to the UK gate and door industries in recent years, many installers are finding additional costs piling up to re-calibrate their equipment.

Until recently this meant a complex procedure of shipping expensive equipment across continents for calibration. Often this equipment is vital to an installers everyday role and can cause headaches when waiting for anything from 7 days up to 4 weeks to get the item back!

**VISIT [WWW.FORCETESTTOOL.CO.UK](http://WWW.FORCETESTTOOL.CO.UK) TO DOWNLOAD A RE-CALIBRATION FORM.**



# PHOTOCELL SENSORS



Our vast range of photocell sensors provide a wide spectrum of applications, compatible to suit almost any specification. Please contact us to discuss any specific requirements for your gates, doors or machine applications.

## PRATEL FT25B

Surface Mounted  
Battery Powered TX



- ▶ **IP45 Protection Rating**
- ▶ **Range:** 25m nominal (10m in external use)
- ▶ **Peak Power Consumption:** 30mA
- ▶ **Relay Outputs:** 1
- ▶ **Relay Rating:** 0.5A @ 24v AC/DC
- ▶ **Working Temp:** -20°C to +55°C
- ▶ **Input Voltage:** 12 / 24v AC/DC

## PRATEL FOTO30A/B

Surface Mounted



- ▶ **IP45 Protection Rating**
- ▶ **Range:** 30m nominal (15m in external use)
- ▶ **Peak Power Consumption:** 50mA
- ▶ **Relay Outputs:** 1
- ▶ **Relay Rating:** 0.5A @ 24v AC/DC
- ▶ **Working Temp:** -20°C to +70°C
- ▶ **Input Voltage:** 12 / 24v AC/DC

## PRATEL FOTO35SDE

Flush Mounted



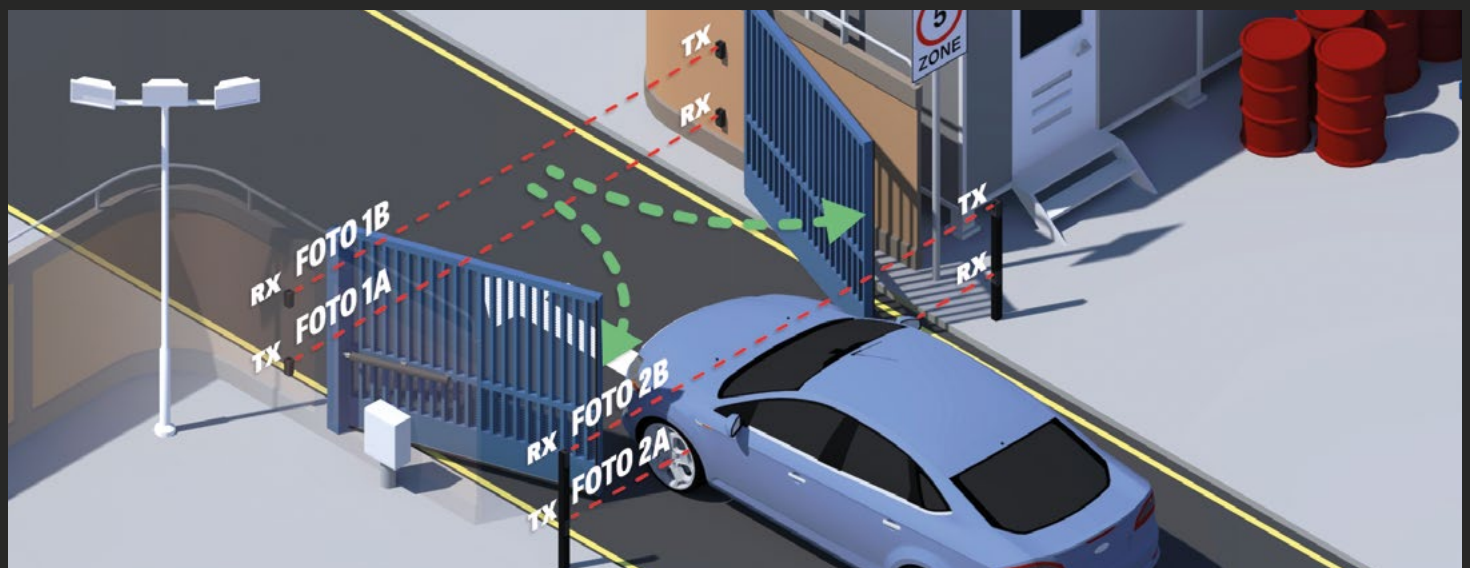
- ▶ **IP44 Protection Rating**
- ▶ **Range:** 35m nominal (25m in external use)
- ▶ **Peak Power Consumption:** 30mA
- ▶ **Relay Outputs:** 1
- ▶ **Relay Rating:** 0.5A @ 24v AC/DC
- ▶ **Working Temp:** -20°C to +60°C
- ▶ **Input Voltage:** 12 / 24v AC/DC

## BATSLIM

x1 Battery



3.6V Lithium Thionyl Chloride (single battery)\*  
for FT25B and JCM Radio Band 3 kit  
\*Two required



▶ **Example** of a typical photocell installation



## PRASTEL FSTYLE25A

Surface Mounted  
Vandal Resistant



- ▶ **IP55 Protection Rating**
- ▶ **Range:** 25m rated (10m in external use)
- ▶ **Peak Power Consumption:** 50mA
- ▶ **Relay Outputs:** 1
- ▶ **Relay Rating:** 0.5A @ 24v AC/DC
- ▶ **Working Temp:** -20°C to +55°C
- ▶ **Input Voltage:** 12 / 24v AC/DC

## EASYGATES FIRE-F180

Surface Mounted



- ▶ **IP55 Protection Rating**
- ▶ **Range:** 20m Maximum
- ▶ **Peak Power Consumption:** 25mA (TX) / 35mA (RX)
- ▶ **Relay Outputs:** 1
- ▶ **Relay Rating:** Max. 500mA @ 48v AC/DC
- ▶ **Working Temp:** -10°C to +60°C
- ▶ **Input Voltage:** 12 / 24v AC/DC

## EASYGATES FIRE-PRO

Anti-Vandal Cover



- ▶ **Anti-Vandal Covers** For The FIRE-F180 Photocells
- ▶ **PLEASE NOTE:** Photocells are **NOT** included!
- ▶ Adds **increased resistance** to harsh weather / environments
- ▶ Adds increased protection from damage, knocks and scratches

## ARMAS FTC981M

180 Degree  
Anti-vandal



- ▶ **Heavy duty and robust,** ideal for **industrial** use
- ▶ **Anti-vandal** cast aluminium casing
- ▶ **Adjustable** 180° horizontally and 30° vertically
- ▶ Double rubber seal
- ▶ Double hole for cable entry
- ▶ **IP55** Protection Rating
- ▶ **Range:** 15m Maximum
- ▶ **Input Voltage:** 12 / 24v AC/DC

## ARMAS FTC981MB

180 Degree Anti-vandal  
Battery Powered TX



- ▶ Alternative **battery version** of the Armas FTC981M
- ▶ **Transmission Range:** 8 to 15 meters
- ▶ **Average Battery Life:** 12 to 18 months
- ▶ **Power Supply:** RX: 12 / 24v AC/DC TX: 6v battery

**CUSTOM MADE & FINISHED PHOTOCELL POSTS  
AVAILABLE TO SUPPORT ALL BRANDS!**

Full manufacturer's range available at [www.easygatesdirect.co.uk](http://www.easygatesdirect.co.uk)



# LOOP DETECTORS & CABLES

With over 10 years experience specifying and supporting vehicle loop detector products, we have selected what we believe to be the best performing products on the market. Contact us to discuss your specific requirements for gates, doors or machines.

## SENSABLE SENSORS



ULD4669/11F



ULD4669/13F



ULD4669/23F

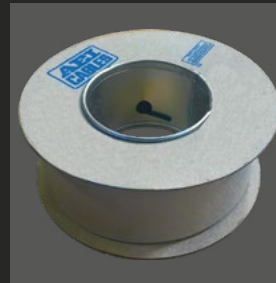
- ▶ **Number of Channels:** 1 or 2
- ▶ **Relay Outputs:** 1 x (NO/NC) or 2 x (NO)
- ▶ **Input Voltage:** 230v AC or 12/24v AC/DC
- ▶ **DIN Base:** Included
- ▶ **Sensitivity Adjustment**

## LOOP CABLES



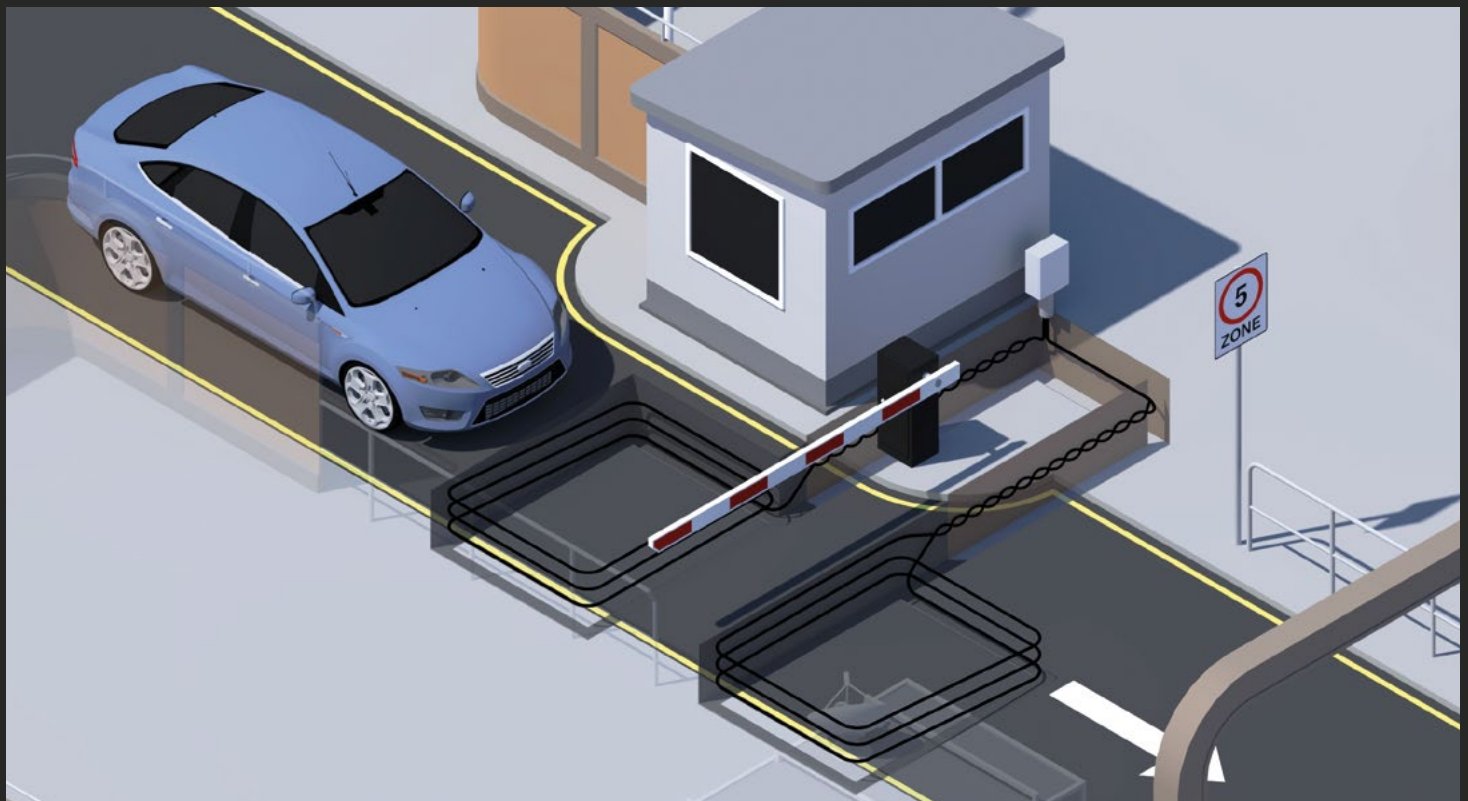
PRASTELO  
PREFORMED LOOP CABLE

- ▶ **Options Available:**  
**WIRE1** (2m x 1m)  
**WIRE2** (3m x 2m)
- ▶ **15 Meter**  
Connection Cable
- ▶ **IP67** Protection Rating
- ▶ **Magnetic Induction**  
Detection
- ▶ **Pre-coated and**  
**Treated PUV** Covering



AEI  
LOOP CABLE

- ▶ **Current Rating:**  
**Single Cable:** 24.00 Amps  
**2 Cables:** 19.50 Amps  
**3 Cables:** 15.50 mV/A/M
- ▶ **Maximum DC**  
**Conductor Resistance:**  
20 °C: 20.00 Ω/Km
- ▶ **Nominal Overall Diameter:**  
3.00 mm
- ▶ **Nominal Weight:**  
17.00 Kg/Km



▶ Example of a typical loop detector installation

# ENCLOSURES

## FIBOX ARCA CABINETS



The FIBOX ARCA cabinets are a range of high quality enclosures for the packaging and protection of electrical and electronic components and systems. Enclosures come with standard shelf configuration.

The high performance UV stabilised polycarbonate cabinets are lightweight, long lasting, chemical resistant, and non corrosive for use in harsh and demanding environments. The cabinets are also water and high impact resistant for protection against vandals and the elements.

### ▶ DOOR

- Door opening angle 120°
- Both landscape and portrait option
- Pre-formed fixing studs inside
- Easy access to contents

### ▶ LOCKING

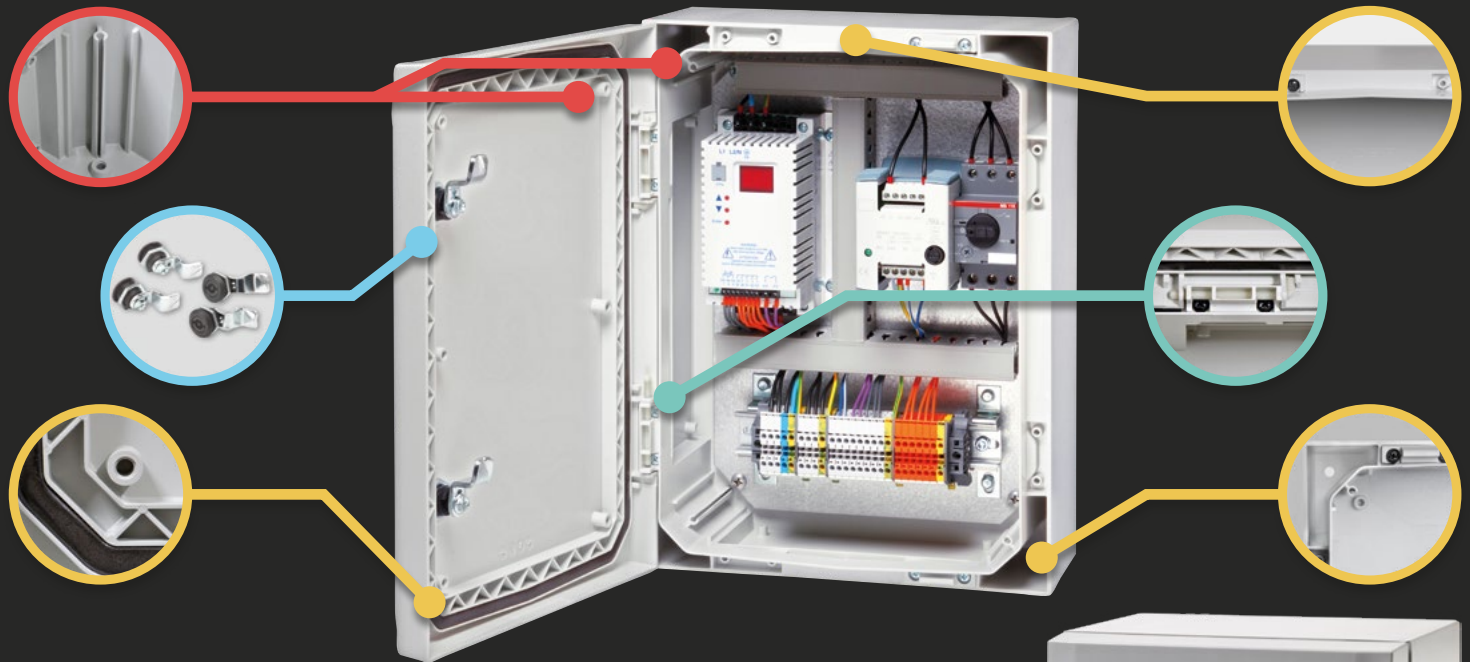
- Double-bit
- Changeable lock inserts

### ▶ MOUNTING PODS

- On the base, cover and four base sides

### ▶ GASKET

- Wide and secured gasket with PUR material for high quality sealing
- Special molded rib design makes the cabinet stable and solid
- Double corner to secure fixing without destroying the IP rating
- Declined base design for better waterproofing
- Patent pending hinge design for easy assembly and refined appearance
- Robust and rigid cabinet



MODEL	DIMENSIONS
ARCA 302015	300x200x150mm
ARCA 403021	400x300x210mm
ARCA 504021	500x400x210mm
ARCA 604021	600x400x210mm
ARCA 705030	700x500x300mm
ARCA 806030	800x600x300mm



**CUSTOMISE YOUR PRODUCTS WITH OUR LASER ETCHING SERVICES. PROFESSIONAL LOOK, PRE-BUILT CABINETS FOR AUTOMATION, ACCESS AND MACHINERY APPLICATIONS!**

# EasyGates *Direct*

**GATE & GARAGE AUTOMATION    ACCESS CONTROL**  
**GATE SAFETY    INTERCOMS & KEYPADS    SPECIALISED PHOTOCELLS**  
**OEM DESIGNED PRODUCTS    CUSTOMISED RADIO SYSTEMS**

## 24/7 ORDERS ONLINE OR BY PHONE

8:30AM - 5PM Monday to Friday 9AM - 3PM Saturdays.



## 1000'S OF PRODUCTS

at great prices!



## EXPERT TECHNICAL SUPPORT

Dedicated team offering pre / post-sales support and technical advice via **phone, email, forum or live chat.**



## MANUALS & GUIDES

Easy to view and download completely **free.**  
No sign up needed! Start today.  
[manuals.easygates.co.uk](http://manuals.easygates.co.uk)



## TRAINING FACILITIES

Gate safety legislation, force testing,  
safety edge assembly and more.



## PERSONALISED PRODUCTS

Personalise your installations  
with our laser etching service.



To find out how EasyGates Direct can supply tailor-made solutions to your business, contact:

## WWW.EASYGATESDIRECT.CO.UK



01384 569 942



INFO@EASYGATESDIRECT.CO.UK



EASYGATESDIRECT



Raising Standards  
Safety Assured



@EASYGATES



UNIT 16 JAMES SCOTT ROAD, HALESOWEN, WEST MIDLANDS, B63 2QT